

Colossus Resources

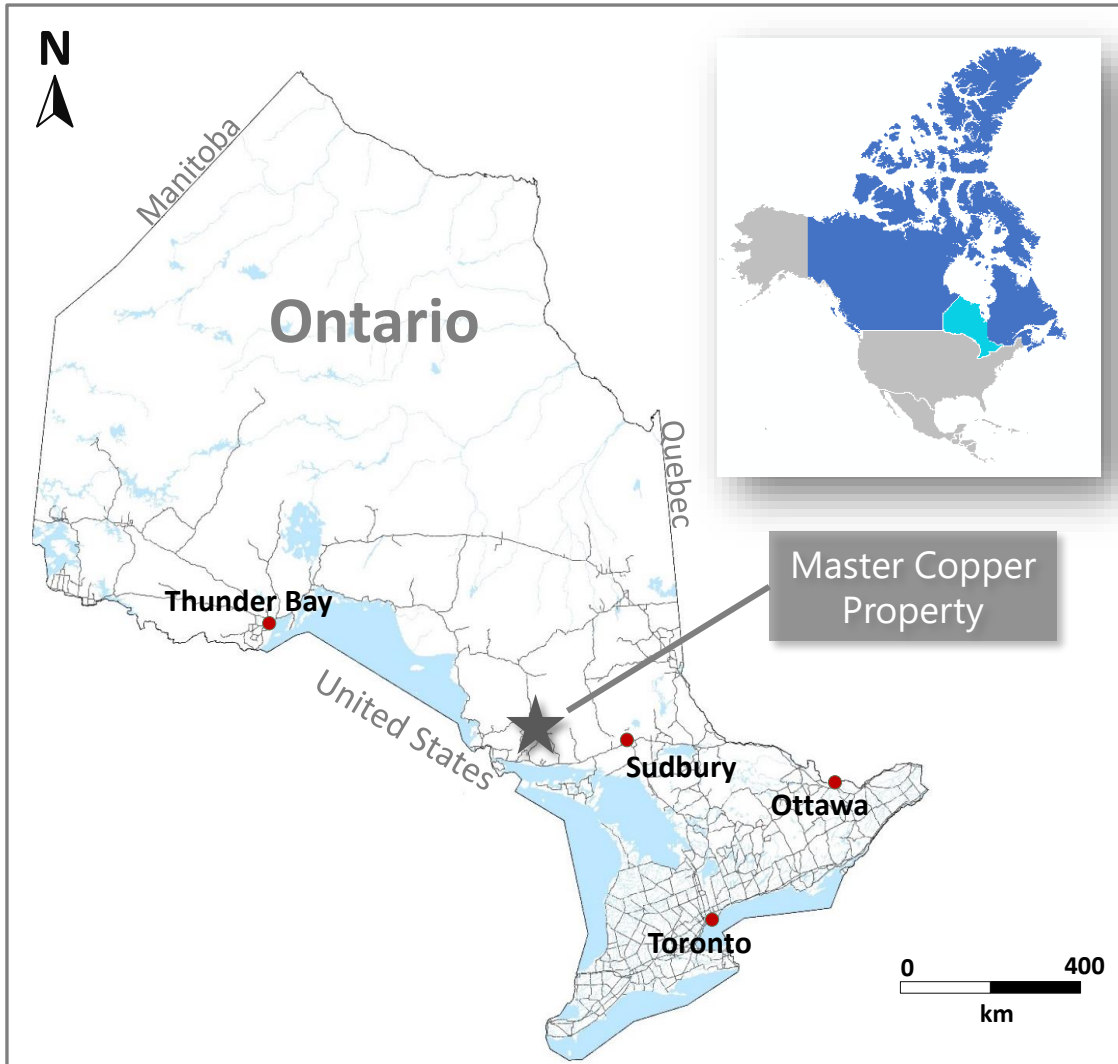
Master Copper Property Overview

Bruce Mines, Ontario

Property Summary

- The Master Copper property consists of 13 mining claims covering approximately 1,075 hectares
- The property is situated 50km northeast of Bruce Mines, Ontario, the site of the first copper mine in North America in 1842
- Copper deposits of the Bruce Mines area numerous and the Master Property area contains two copper deposits with non-compliant resources totaling 210,000 tonnes grading 1.84% Cu
- Grab samples on the property from 2011 have reached 7.16% Cu
- The property is contiguous to the former copper producing Sudbury Contact mine which still hosts combined resources of 184,000 tonnes grading 2.3% Cu
- The Master Property has not seen any drilling since 1955 and very little systematic exploration in the past 65 years
- Access to the property is considered excellent via logging roads and trails

Regional Location

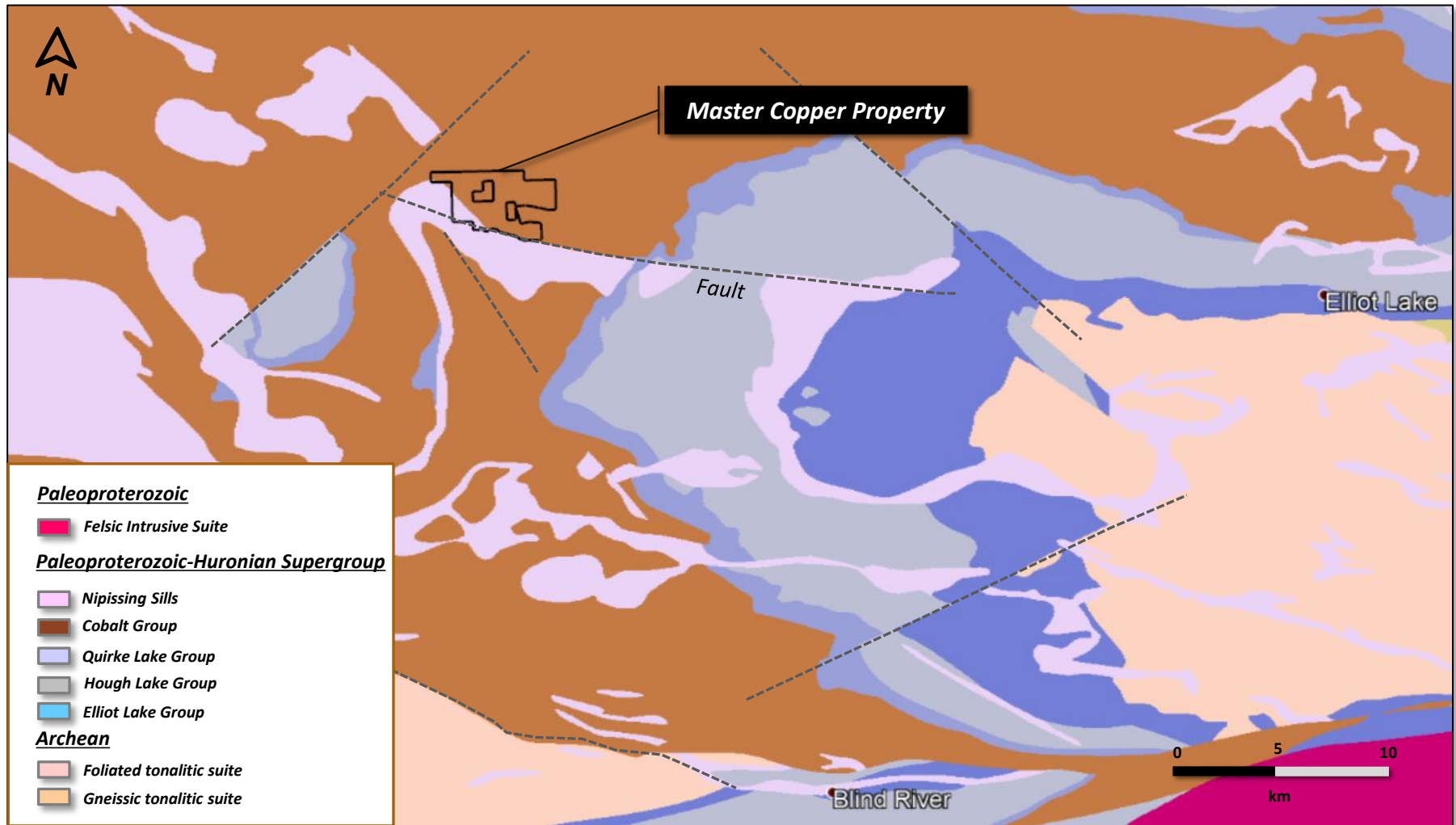


Location and Access



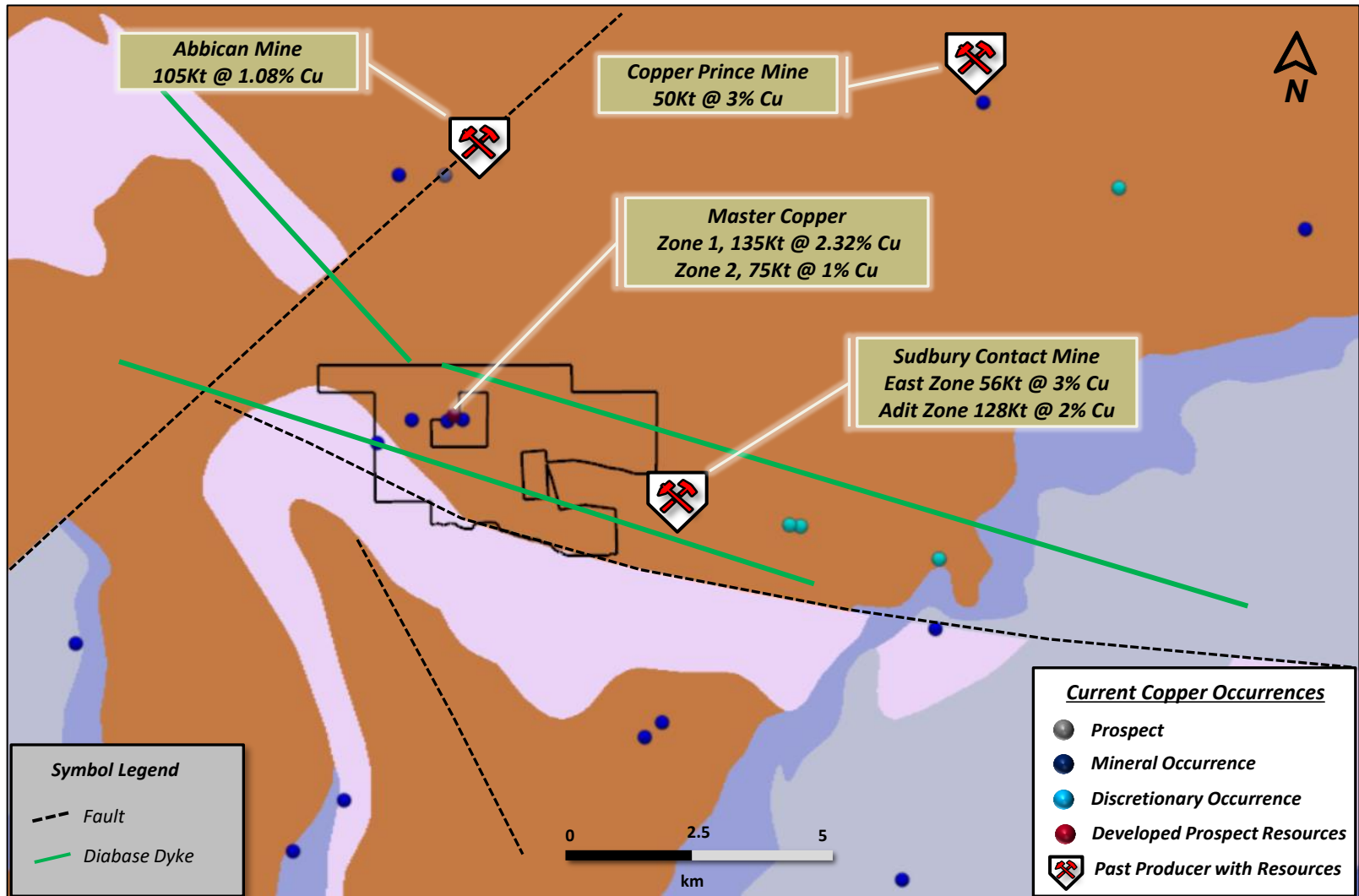
- Excellent location, access and nearby infrastructure.

Regional Geology and Structure

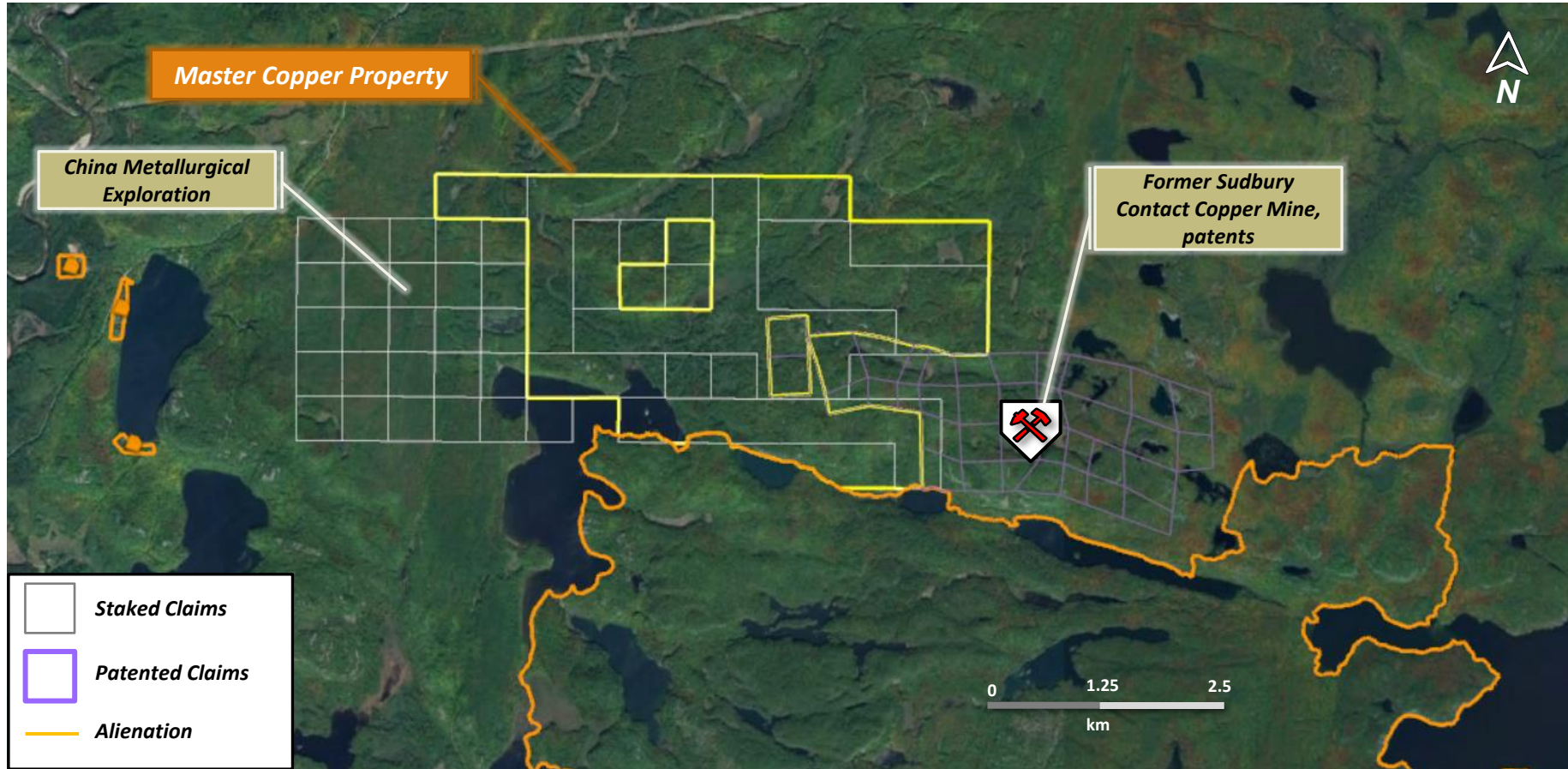


- The Master Copper Property is hosted within the Elliot Lake sedimentary basin and within a structurally active setting

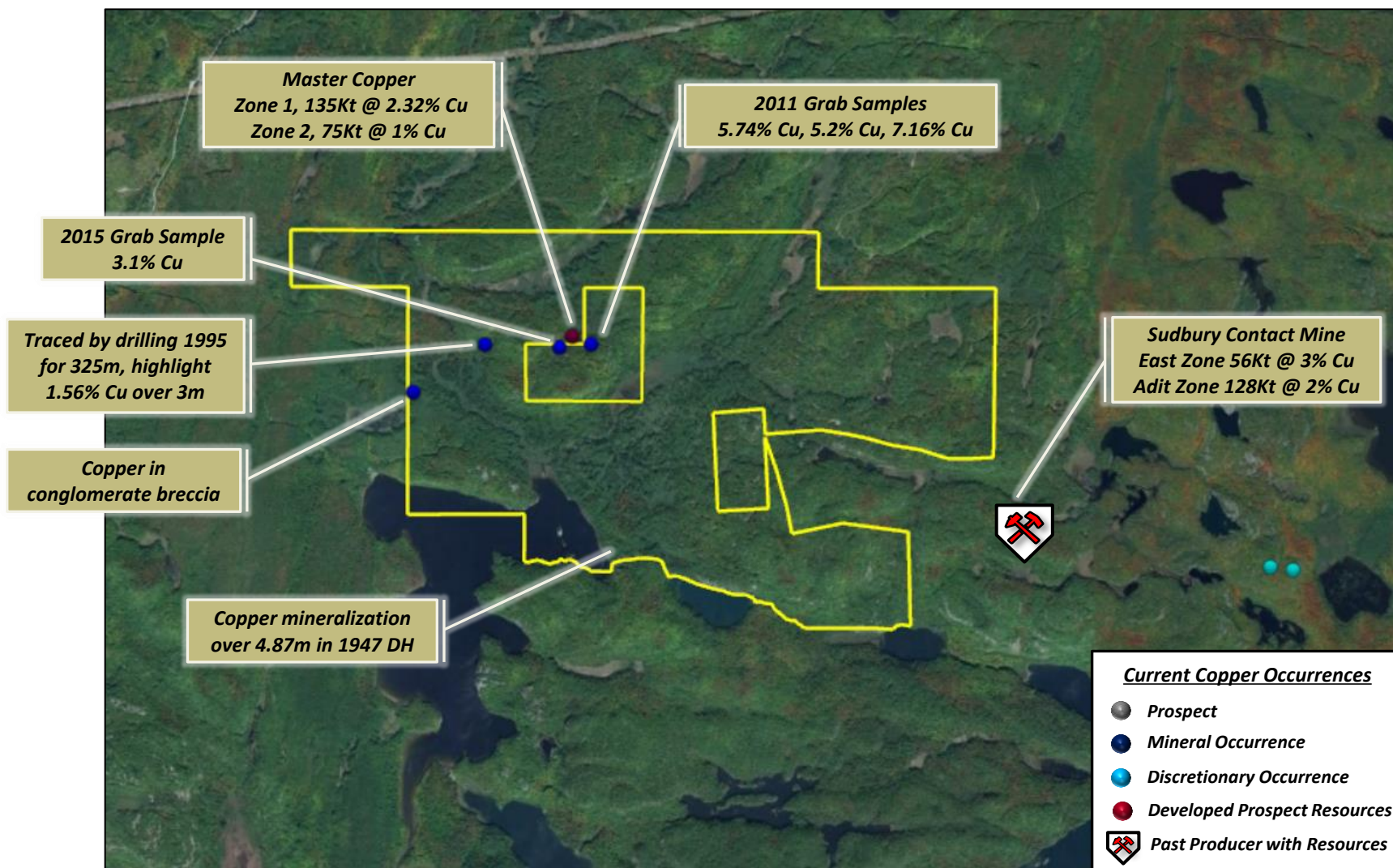
Copper Deposits and Former Producers



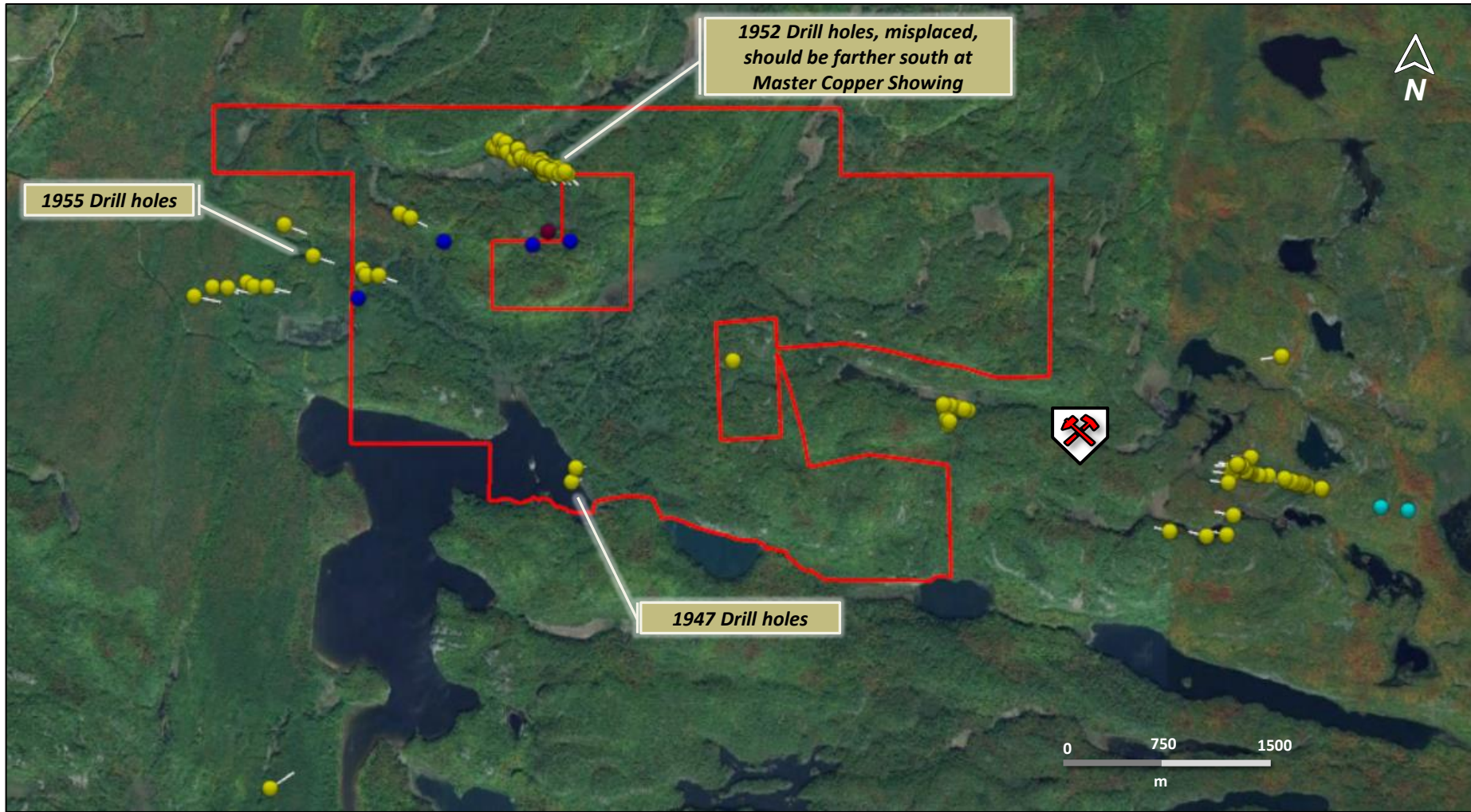
Local Claim Fabric



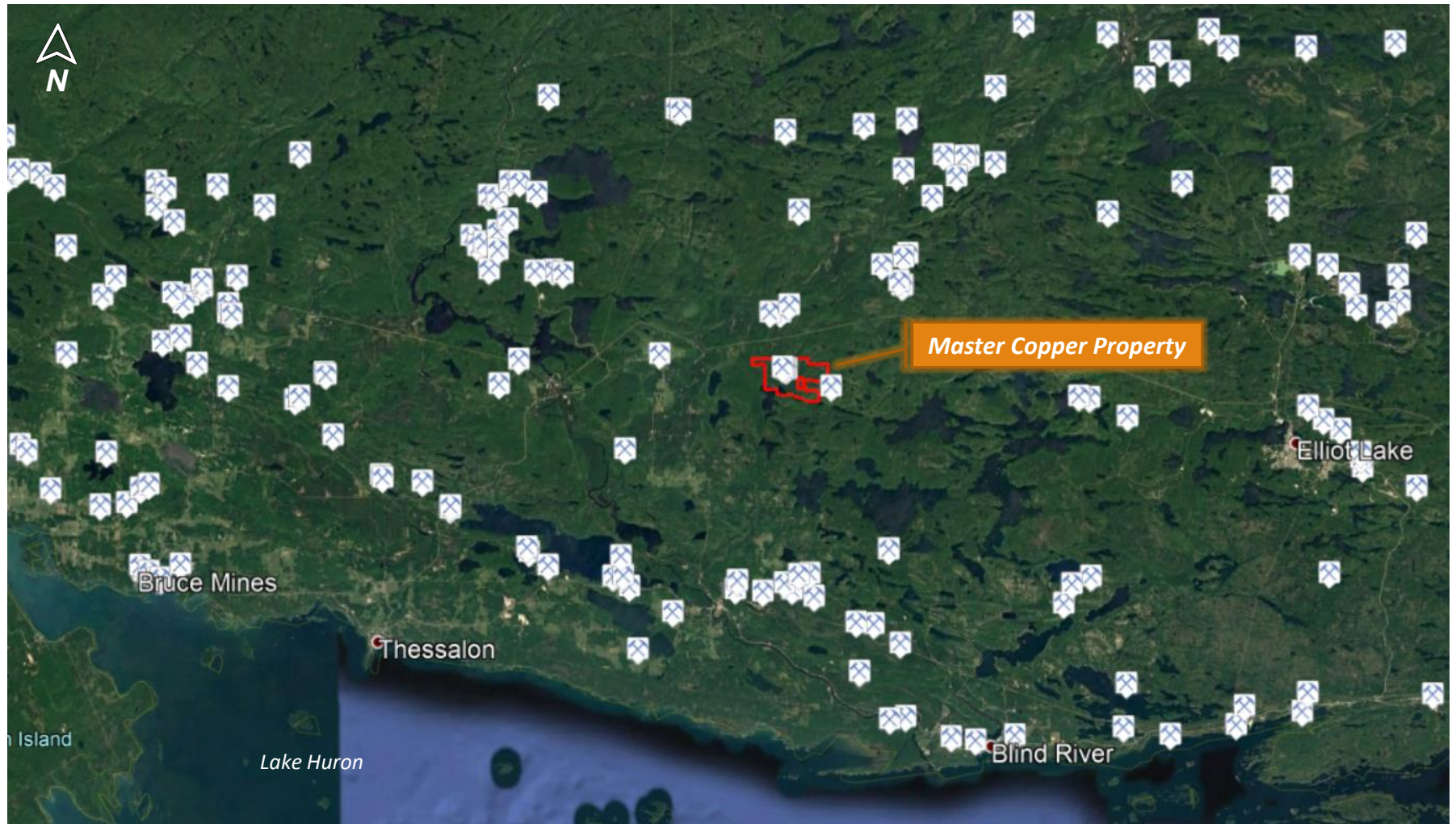
Copper Occurrences



Historical Drilling...no drilling since 1955



Abandoned Mine Inventory (AMIS)



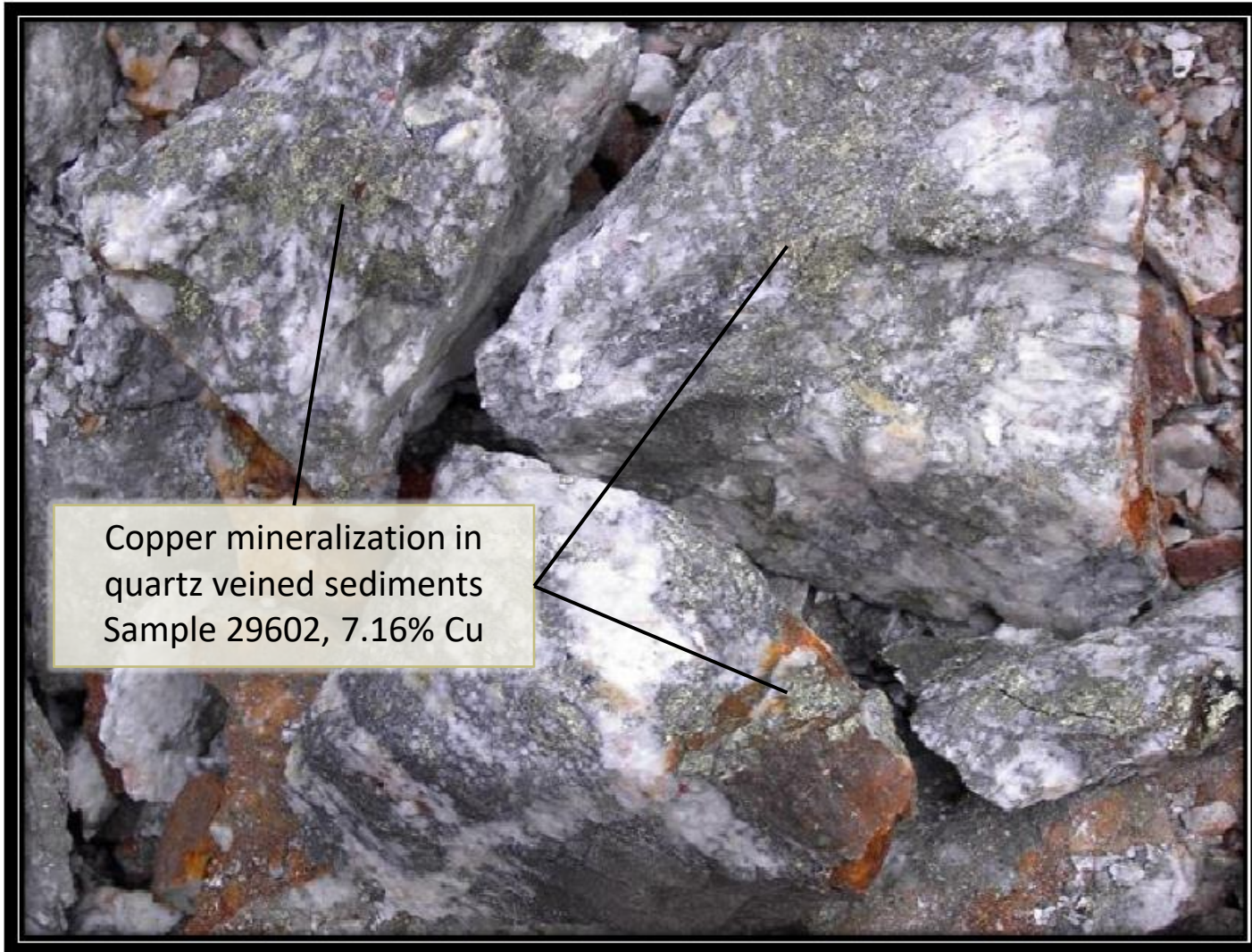
➤ The area is littered with former mines and old workings

North Shore Copper Producing History



- The copper mines of Bruce Mines located 50km southwest of the property have a long history.
- Records are vague but production totaled between 400,000 to 500,000 tones of ore 2.5 to 4.0% Cu and 0.5 g/t Au.
- Production was from copper rich-veins in diabase dyke and had persistent lengths of up to 2,500m.
- Mining widths were commonly 1.5 to 2m wide but reported up to 7m.
- The origin of the veins is related to copper-rich hydrothermal fluids evolving from pre-existing pathways now occupied by diabase dykes and associated with fault systems.
- These are the same mineralizing controls on the Master Copper property.

Copper mineralization of the Master Copper Property



Copper mineralization in
quartz veined sediments
Sample 29602, 7.16% Cu